



Elix "16" - ELX1003



Elix "16" - ELX1003

- energy efficient EC motor
- provides low level continuous ventilation to control condensation
- 3 speed centrifugal fan - exceeds **16** l/sec Trickle Speed 2
- Humidistat boost speed - 21 l/sec
- powerful low profile unit
- wall, ceiling or window (with additional window kit)
- low noise levels
- low running costs
- for any domestic wet room
- complies with Building Regulations



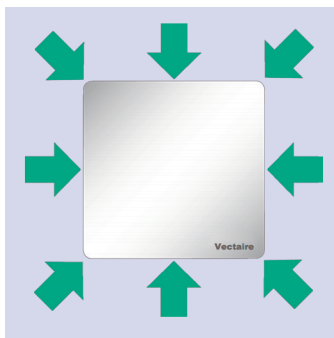
Elix "16" - ELX1003

GENERAL FEATURES

- exhausts directly to the outside or through longer lengths of ducting (can be installed in window with optional kit)
- sfp down to 0.14 W/l/s
- easy and economical to install and maintain
- runs continuously at pre-selected choice of two speeds (fixed at installation)
- Speed 1 operates at 13.1 l/s (factory set)
- Speed 2 operates at **17 l/s**
- "HDT" and "HDTLV" boost at 21 l/sec via integral humidistat when humidity exceeds pre-set level
- speed boosted to maximum (27.8 l/s) using integral pull cord or by:
 - remote switch/light switch
 - PIR sensor
 - DRH240 (dynamic remote humidistat)
- anti-vibration gasket
- washable polypropylene filter included if required
- energy saving ventilation
- **extremely low running costs**
- low carbon footprint
- 5 year warranty

TECHNICAL FEATURES

- shockproof, high quality technopolymer casing
- designed using latest wind tunnel technology and CFD simulations
- EC induction motor with thermal protection
- 43,000 hour life motors with maintenance free and long life ball bearings
- operates in ambient temperatures up to 40°C
- double insulated - no earth required
- IPX4 Splashproof rated - can safely be installed in Zones I and II, SELV models IPX7 rated



ELIX "16" MODELS AVAILABLE:

- **ELX1003** - 3 speed, continuous running, cord or remote
- **ELX1003DT** - 3 speed, continuous running with comfort timer (timer does not activate unless fan has been running for 2 minutes to avoid unnecessary night-time operation) and pull-cord
- **ELX1003HDT** - with comfort timer, humidistat, pull-cord, special humidity boost speed, and data logging facility
- **ELX1003LV** - 3 speed, continuous running with pull-cord - LOW VOLT (SELV)
- **ELX1003DTLV** - 3 speed, continuous running, with comfort timer, and pull-cord LOW VOLT (SELV)
- **ELX1003HDTLV** - with comfort timer, humidistat, pull-cord, special humidity boost speed, and data logging facility - LOW VOLT (SELV)

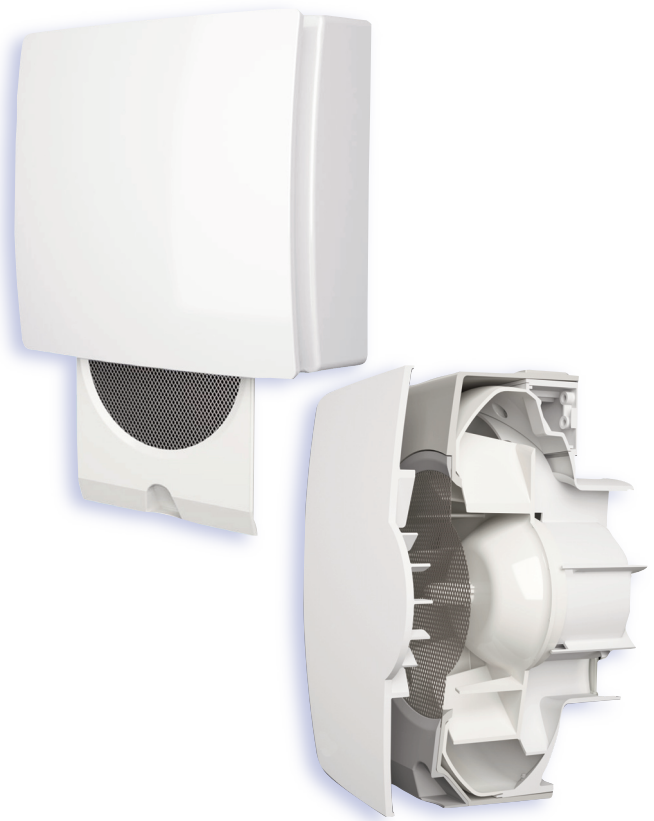
N.B timer adjustable from 0-30 minutes

COMPLIES WITH

- Building Regulations for enhanced energy saving capability
- Building Regulations for reliable, efficient ventilation
- EU RoHS Directive Compliant.
- Complies with IEC60335-2-80, LVD2006/95/CE and EMC2014/30/UE (European Directive against radio interference and electro-magnetic compatibility)
- CE marked
- SAP PCDB Listed
- Energy Saving Trust Best Practice Compliant

TYPICAL SPECIFICATION AVAILABLE AT

<http://www.vectaire.co.uk/downloads>



Vectaire Ltd can supply all accessories for use with these units, including product filters, air filter cassettes, silencers, fire dampers, air valves, ducting, outside grilles and wall cowls. Additionally, Vectaire offers a design service to ensure that the unit installed is the best possible to provide efficient, effective, low energy and low running cost ventilation. Vectaire can also organise installation, commissioning and maintenance of these products.

N.B These fans are NOT suitable for use with Gravity Grilles. They should be installed using either Cowls or Fixed Grilles. Only approved accessories should be used:

Wall Plates – as required

Wall terminations – all wall terminations must use the approved wall cowl or high rise kit

Optional window kit



Elix "16" - ELX1003

TECHNICAL CHARACTERISTICS											
Model	Airflow l/sec				Power - Watts				dBA (@ 3m in free field)		
	Trickle 1	Trickle 2	Humidi- stat Boost	Boost	Trickle 1	Trickle 2	Humidi- stat Boost	Boost	Trickle 1	Trickle 2	Boost
ELX1003	13.1	17	21	27.8	2.4	4.1	8.4	15	15.5	17.5	35

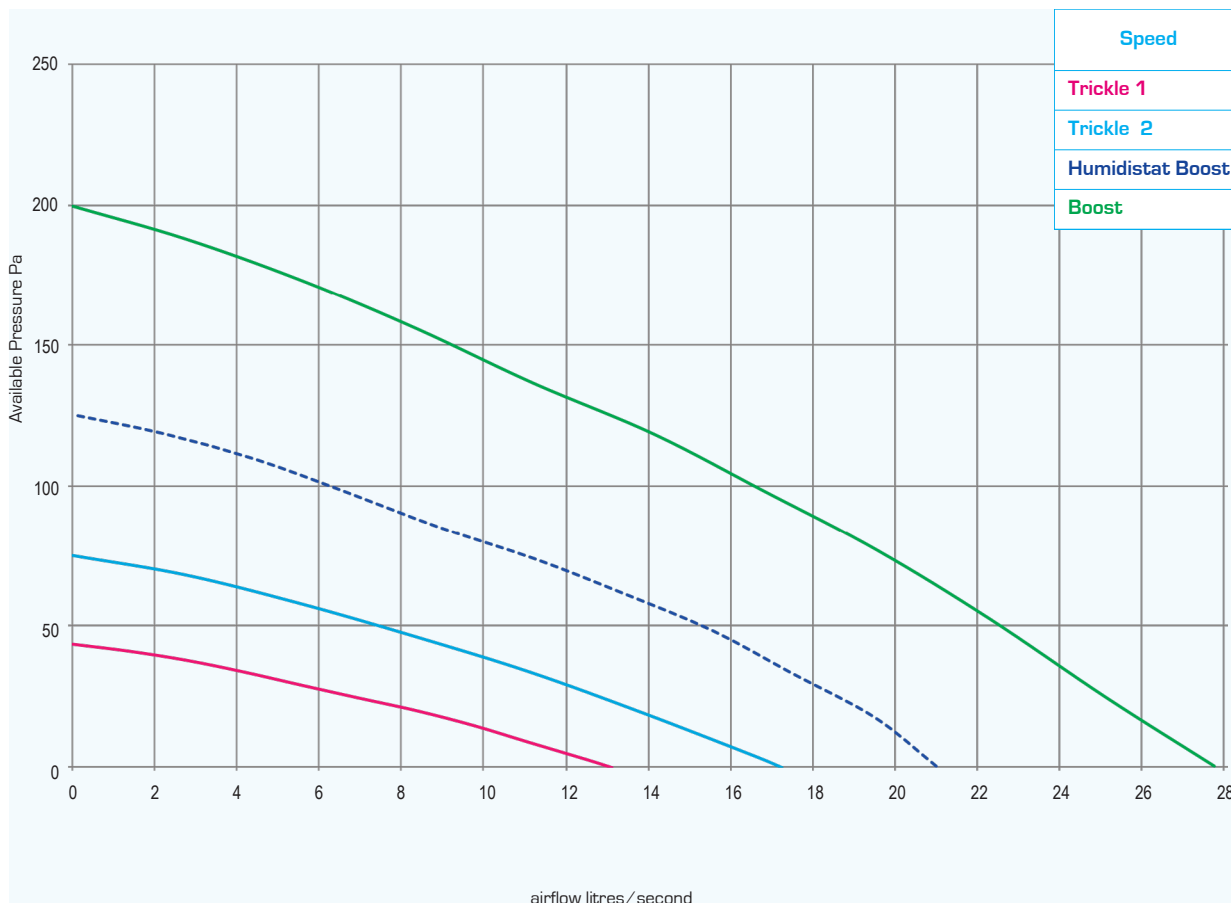
RESULTS for SAP CALCULATIONS - SAP2012 data ENERGY LEVEL PERFORMANCE - using rigid ducting only			
Unit Configuration	Specific Fan Power (W/l/s)	EST Best Practice Performance Compliant	Flow Rate (l/sec)
In room - kitchen	0.22	Yes	13.0
In room - wetroom	0.16	Yes	8.0
Through wall - kitchen	0.17	Yes	13.0
Through wall - wetroom	0.14	Yes	8.0

Figures from BRE test results at minimum flow rate conditions



Elix "16" - ELX1003

PERFORMANCE (curves are for guidance only)



DIMENSIONS - mm

